



**Customization Installation
Instructions**

August 20, 2010

Title:
xB Hood Deflector

Models:
xB 2011 -

CIIT0966

TOYOTA Scion XB 2011 TO CURRENT HOOD PROTECTOR
Preparation

Part Number: PU500-52011



NOTE: Part number of this accessory may not be the same as the part number shown.

Kit Contents

Item #	Quantity Req'd.	Description
1	1	Hood Protector
2	1	Hardware Kit

Hardware Bag Contents

Item #	Quantity Req'd.	Description
1	6	Large Bumpons
2	2	Metal Brackets Type A
3	2	Metal Brackets Type B
4	4	Push Type Retainers
5	2	Threaded Type Retainers (Larger Head Diameter)
6	6	Anti-abrasion Film Pads
7	2	Clip Bodies
8	2	Pins
9	2	#6 x 5/8" Flat Head Screws
10	2	*L* Brackets

Additional Items Required For Installation

Item #	Quantity Req'd.	Description

Conflicts

--

Recommended Tools

Personal & Vehicle Protection	Notes
Special Tools	Notes
Installation Tools	Notes
Phillips Screwdriver #2	
Tape Measure	
Special Chemicals	Notes

Color Applicability/Trim Level

Accessory Color																			
Vehicle/Trim Color																			

General Applicability

--

Recommended Sequence of Application

Item #	Accessory
1	
2	
3	

*Mandatory

Vehicle Service Parts (may be required for reassembly)

Item #	Quantity Req'd.	Description
1		
2		
3		

Legend

STOP: Damage to the vehicle may occur. Do not proceed until process has been complied with.

OPERATOR SAFETY: Use caution to avoid risk of injury.

CAUTION: A process that must be carefully observed in order to reduce the risk of damage to the accessory/vehicle and to ensure a quality installation.

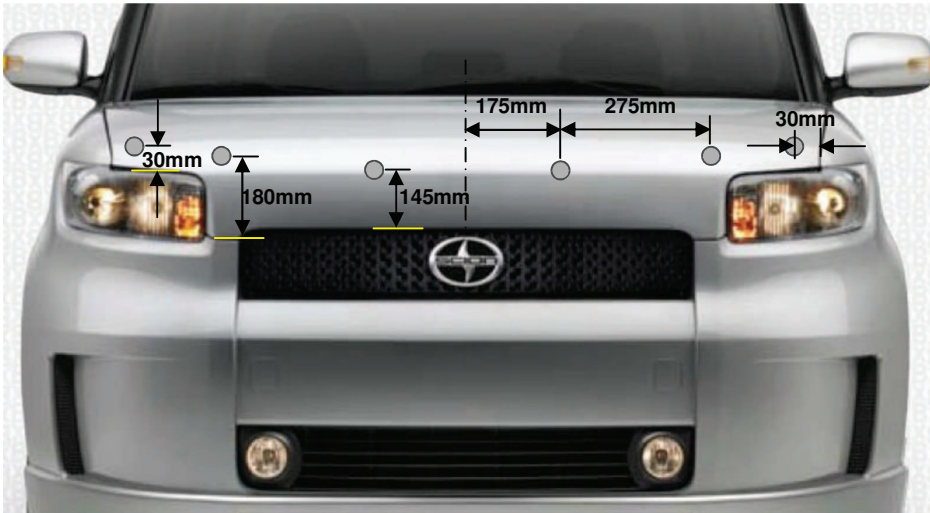
TOOLS & EQUIPMENT: Used in Figures calls out the specific tools and equipment recommended for this process.

REVISION MARK: This mark highlights a change in installation with respect to previous issue.

Installation drawings

Installation Procedure

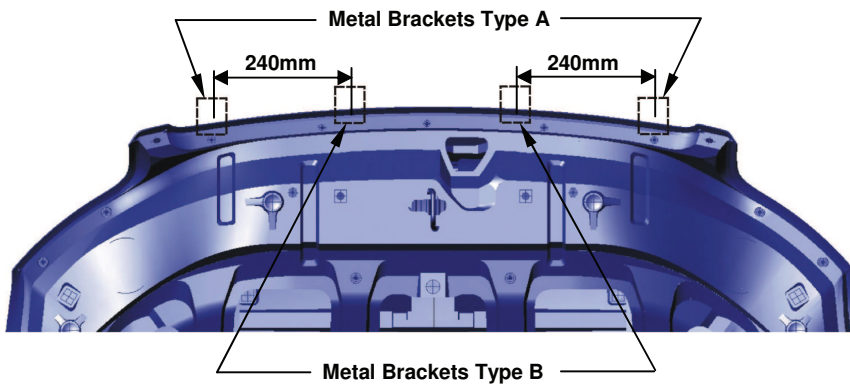
1. Be sure that the hood is clean and dry inside and out.
2. Install the six (6) bumpons as shown. **Attention: the bumpons must be installed on the hood, not on the deflector!!!** If the bumpons are installed on the deflector, they may wear through the paint.



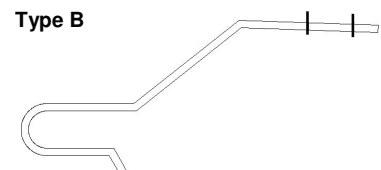
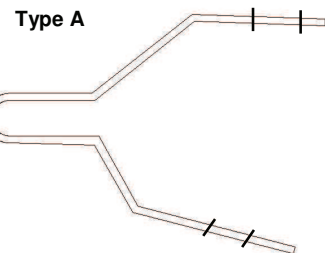
3. Open the hood of the vehicle. Peel and fold an anti-abrasion film pad in half over the edge of the hood, in the four (4) locations shown in illustration.

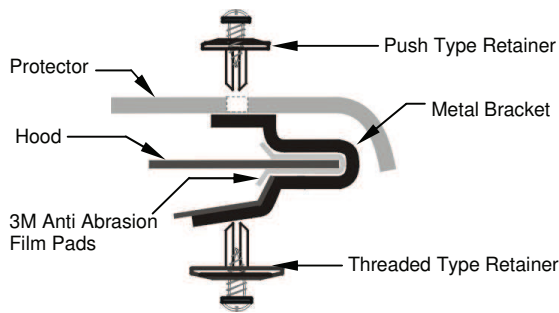


**Looking at underside of the hood
Anti-abrasion Pads and Metal Brackets Location**



Metal Bracket Guide



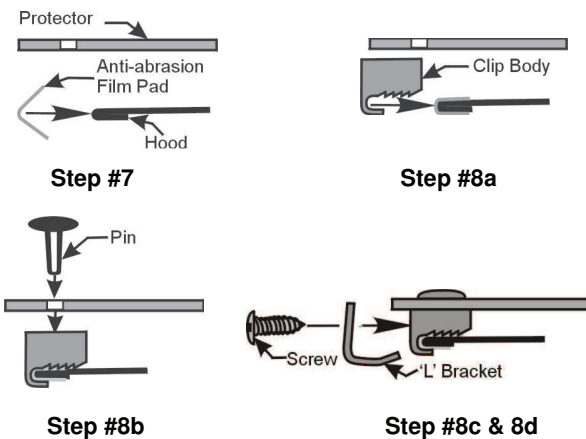


4. Install the metal brackets **Type A** at the outermost locations. Remove and discard the hood seal retaining clips at these locations. Install the metal brackets over the hood edge and fasten to the hood using threaded type retainer supplied. Reattachment of the hood seal will be done at the same time using the threaded type retainer. The hood seal will sit on top of the metal brackets. The threaded type retainer will go through the hood seal, into the hole in the lower leg of the metal mounting bracket and into the hole in the hood. (This retainer has a larger diameter head than the four push type retainers supplied for the next step). Be sure the threaded type retainer is fully seated in the hole and tighten the plastic screw.

NOTE: The job of the plastic screw is expanding the legs of the retainer into the hole. The screw will not fully tighten. Stop threading the screw when it is flush with the head of the fastener.

5. Install the metal brackets **Type B** at the center locations by measuring **240 mm**, from the center of installed metal brackets Type A. Ensure the brackets are well seated on the hood edge.
6. Place the hood protector on the hood resting on the top of mounting hardware; align the 4 center holes in the protector with the holes in the metal brackets. Insert a "push type retainer" through the hole in the protector, and into the bracket. Ensure the protector is well seated against the surface of the metal bracket, and push the center pin of the retainer assembly to lock it into place.

NOTE: Engaging the center pin of the "push type retainer" is best accomplished by placing a #2 Philips drive screwdriver into the recess of the center pin. Use a light force or tap on the end of the screwdriver to seat the pin into the retainer. The retainer can be removed by unthreading the center pin in the conventional manner with a Philips screwdriver, however initial or subsequent placement is best performed using the "push" method described above.



7. Peel and fold the remaining two (2) anti-abrasion film pads in half over the hood edge aligned with the holes in the protector in the area above the headlights. See *Illustration – Step 7*.
- 8a. Place a clip over each of the anti-abrasion film pads on the edge of the hood as shown in *Illustration – Step 8a*.
- b) Insert a pin through the protector into each of the clips. See *Illustration – Step 8b*.
- c) Insert a #6 x 5/8" screw through an 'L'- bracket and into the clip. See *Illustration – Step 8c & 8d*.
- d) Make sure all the components are well seated together; the protector is centered on the hood, and then tighten the screws into the clips.

* Patent No. 6,892,427

9. On some vehicles it may be necessary to adjust the hood bumpers and/or latch for proper clearance.

Note: Do not pull on the protector when opening or closing the hood.

CARE INSTRUCTIONS

Clean the protector with a mild soap and water solution or plastic cleaner only. Do not use chemicals or solvents. **Periodically check to make sure the bumpers are in place and the protector is secure. Avoid using automatic car washes.** Do not pull on the protector when opening or closing the hood

TOYOTA Scion XB 2011 TO CURRENT HOOD PROTECTOR

Checklist - these points **MUST** be checked to ensure a quality installation.

Check:

Look For:

Accessory Function Checks

Vehicle Function Checks